

# VACANT LAND FOR SALE

**0.52± ACRES**

**FOUNDRY**  
COMMERCIAL



**Asking Price \$14,000**

Claire Drive SE & Shadydale Ave SE, Atlanta, GA 30315

## PROPERTY FEATURES

- 0.52± acres
- Zoned R-4, Single-Family Residential
- Good Access to I-85

Parcel ID #

- 14 005800010407
- Contiguous 1.07 Acre Parcel on Claire Drive SE available for sale - \$20,000

\*\*This property is currently subject to a pending quiet title action. The closing of the sale of this property is expressly contingent upon the resolution of the quiet title action in favor of Seller.

For more information, please contact:

**MATT MESSIER, SIOR, CCIM**

Principal  
407.540.7718  
matt.messier@foundrycommercial.com

In Partnership With:

**RG REDROCK**  
GLOBAL

**MICHAEL TABB**  
404.815.1819  
mtabb@redrockglobal.net

420 S. Orange Avenue Suite 950  
Orlando, FL 32801  
407.540.7700

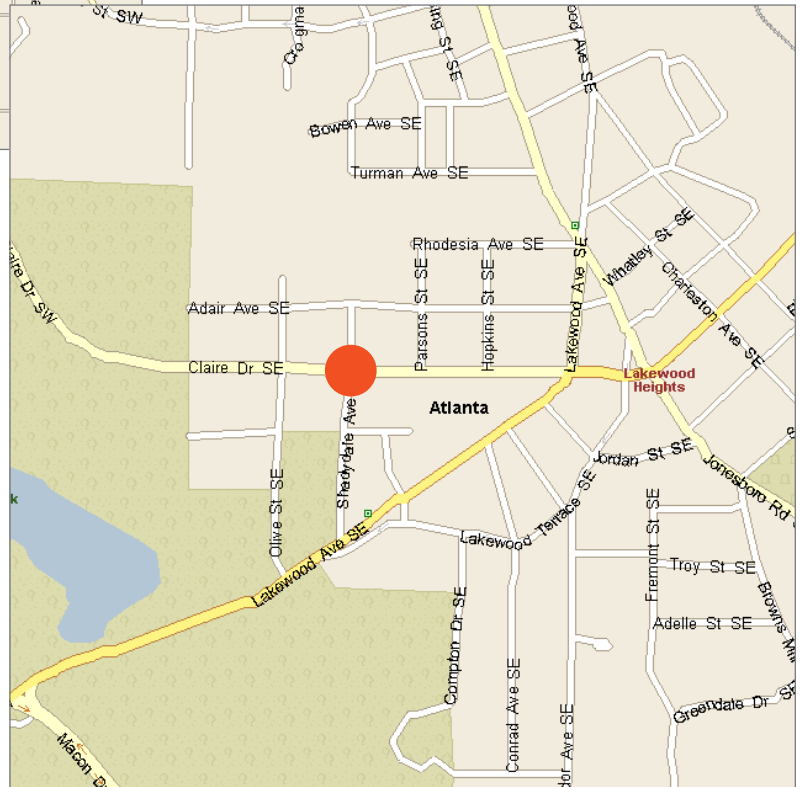
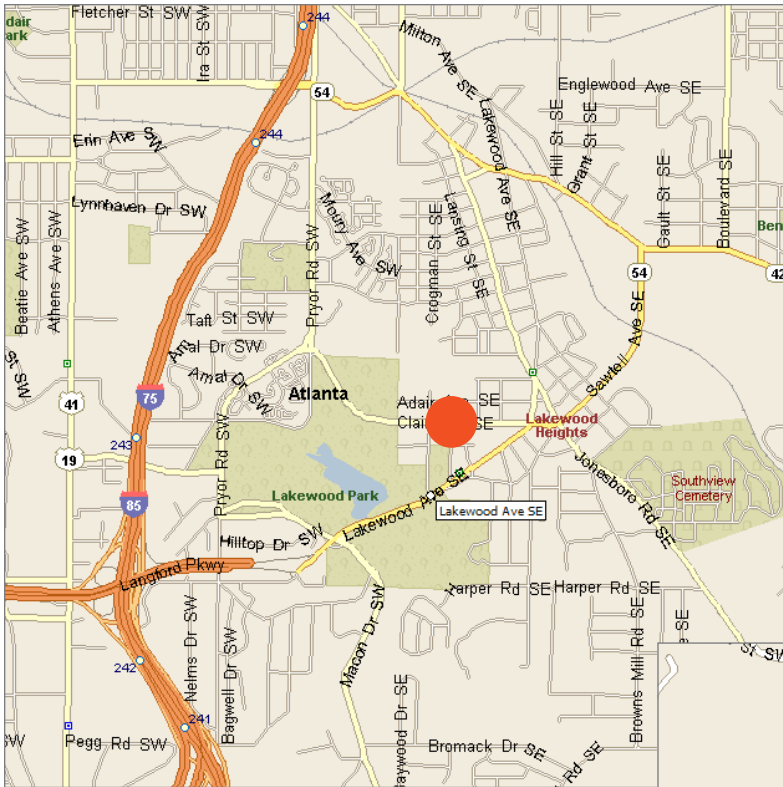
[foundrycommercial.com](http://foundrycommercial.com)

Although the information contained herein was provided by sources believed to be reliable, Foundry Commercial makes no representation, expressed or implied, as to its accuracy and said information is subject to errors, omissions or changes.

# VACANT LAND FOR SALE

**0.52± ACRES**

## LOCATION



For more information, please contact:

**MATT MESSIER, SIOR, CCIM**

Principal  
407.540.7718

[matt.messier@foundrycommercial.com](mailto:matt.messier@foundrycommercial.com)

In Partnership With:

**RG REDROCK**  
GLOBAL

**MICHAEL TABB**

404.815.1819

[mtabb@redrockglobal.net](mailto:mtabb@redrockglobal.net)

**FOUNDRY**  
COMMERCIAL

420 S. Orange Avenue Suite 950  
Orlando, FL 32801  
407.540.7700

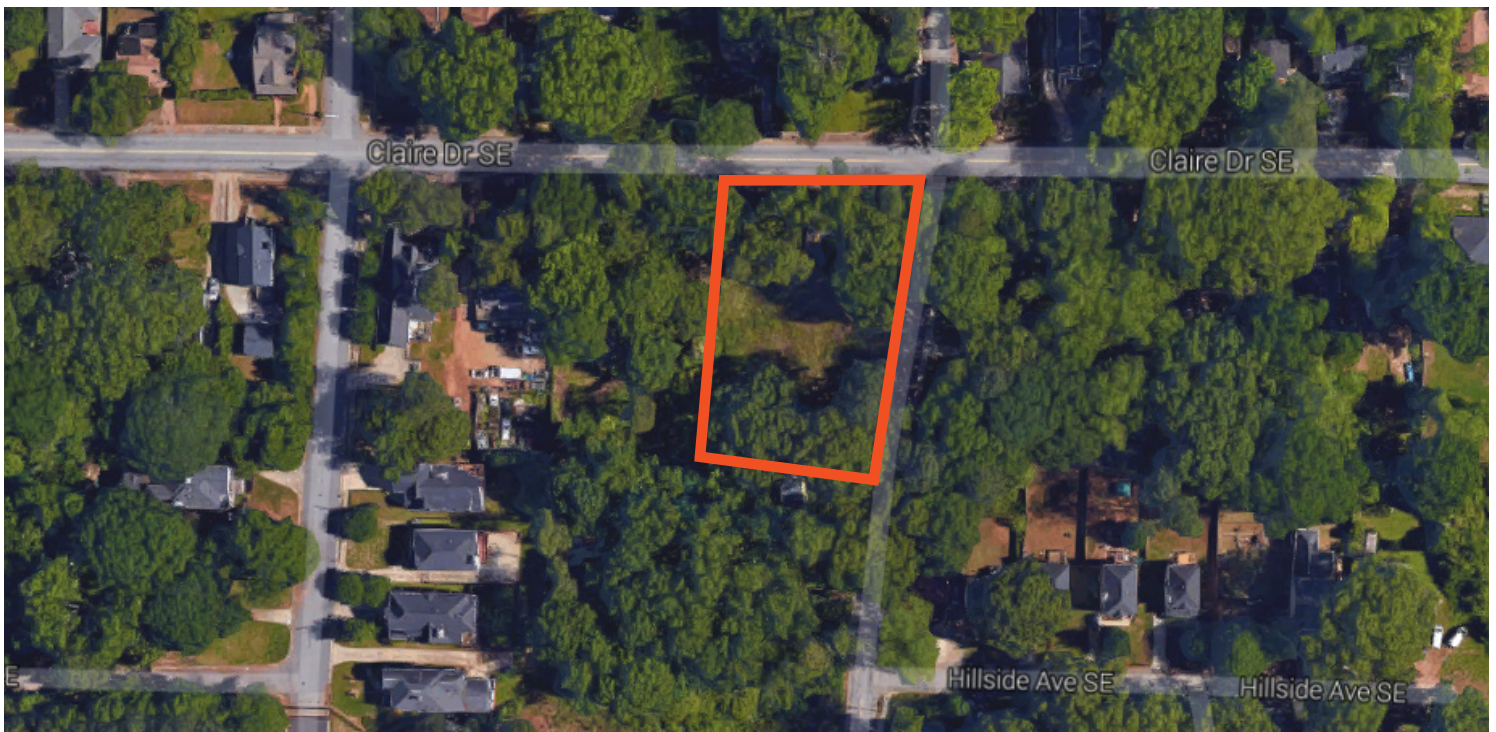
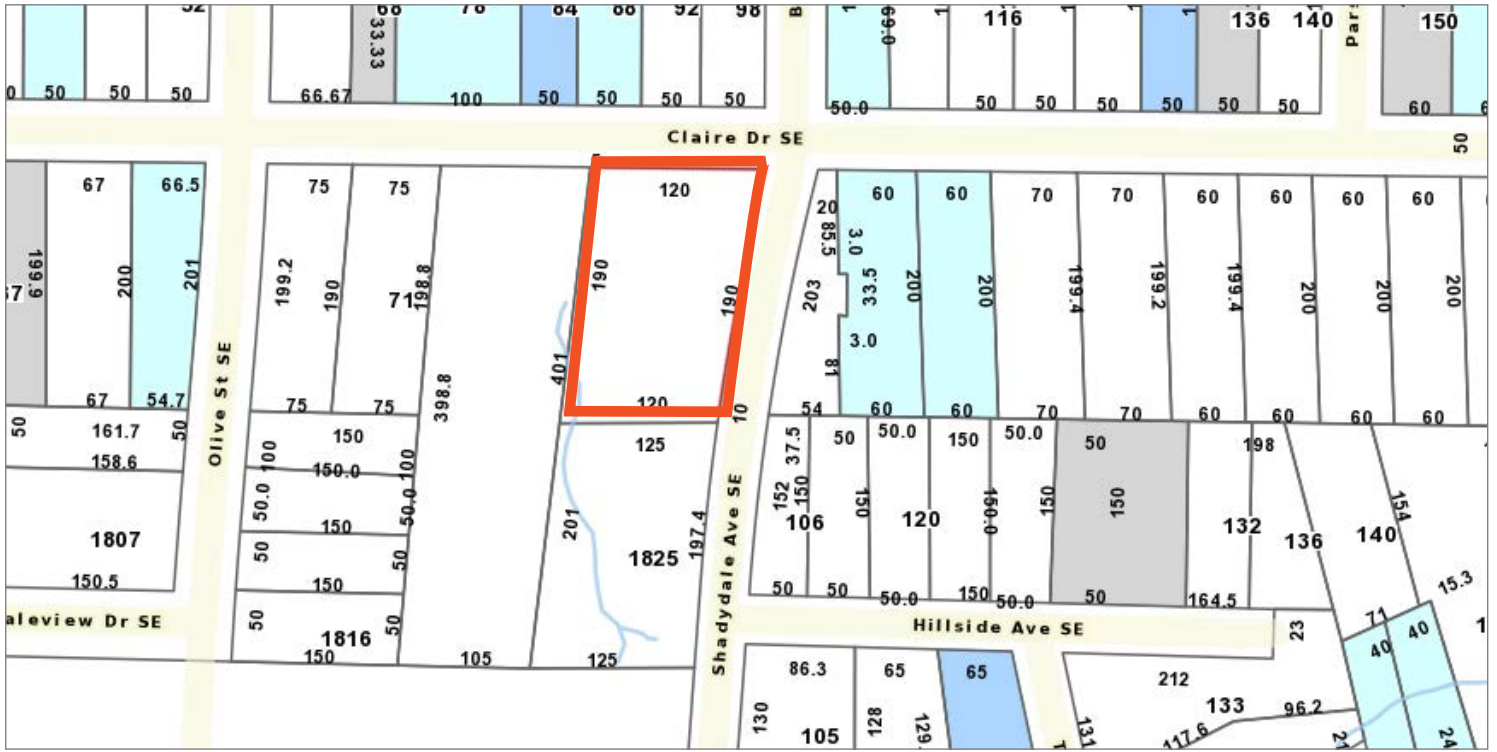
[foundrycommercial.com](http://foundrycommercial.com)

Although the information contained herein was provided by sources believed to be reliable, Foundry Commercial makes no representation, expressed or implied, as to its accuracy and said information is subject to errors, omissions or changes.

# VACANT LAND FOR SALE

## 0.52± ACRES

### LOCATION



For more information, please contact:

**MATT MESSIER, SIOR, CCIM**

Principal  
407.540.7718

[matt.messier@foundrycommercial.com](mailto:matt.messier@foundrycommercial.com)

In Partnership With:

**RG RED ROCK**  
GLOBAL

**MICHAEL TABB**

404.815.1819

[mtabb@redrockglobal.net](mailto:mtabb@redrockglobal.net)

**FOUNDRY**  
COMMERCIAL

420 S. Orange Avenue Suite 950  
Orlando, FL 32801  
407.540.7700

[foundrycommercial.com](http://foundrycommercial.com)

Although the information contained herein was provided by sources believed to be reliable, Foundry Commercial makes no representation, expressed or implied, as to its accuracy and said information is subject to errors, omissions or changes.