

**17 Jesse Hill Junior Drive, NE  
Atlanta, Georgia 30303**



**Location**      **17 Jesse Hill Junior Drive NE  
Atlanta GA 30303**

**Description**      Approx. 19,340 SF of space on 0.7962 acres  
on the east side of Jesse Hill Jr Drive NE

**Area Facts**

- Part of Sweet Auburn Historic District – Easy access to Interstate 75/85
- Near Grady Memorial Hospital & Children’s Healthcare of Atlanta
- Immediately north of Georgia State University

Site	Address	Type	Land (Acres)	Building (USF)	Condition
E	239 Auburn Ave	Land	.3531	N/A	Income Parking
F	229 Auburn Ave	Historic Office Building	.1831	7,416	Demo
G	17 Jesse Hill Dr	Recreational/Health	.2600	19,340	Very Good Condition

Demographics	1 Mile	3 Miles	5 Miles
2011 Est. Population	21,726	152,022	304,873
2011 Est. Households	9,587	69,935	136,776
2011 Est. Avg. HH Income	\$51,310	\$71,146	\$74,084

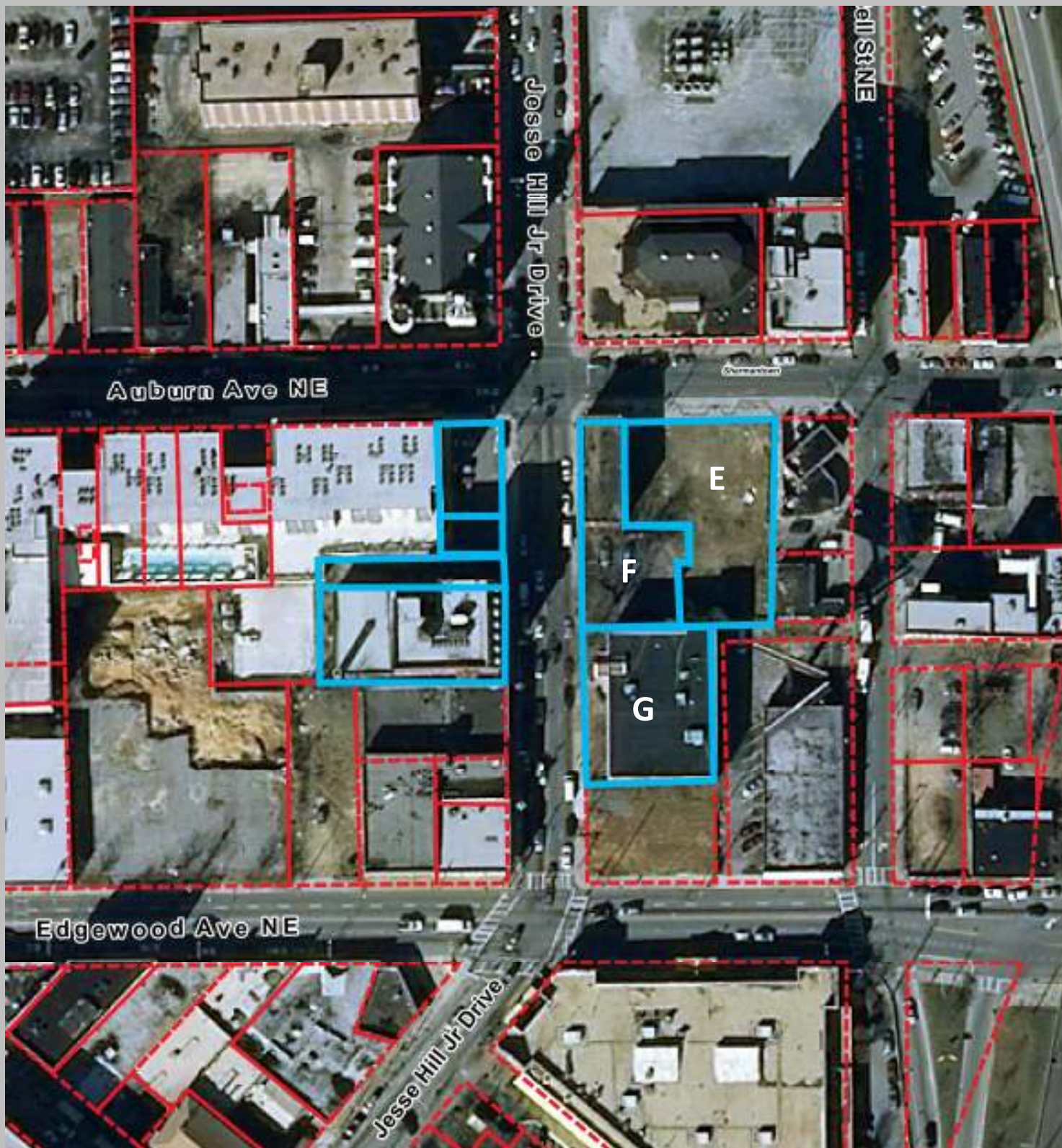
## CONTACT

Michael Tabb  
mtabb@redrockglobal.net  
(404) 815-1819

Joseph Evans III  
jevans@redrockglobal.net  
(404) 815-1819

[www.redrockglobal.com](http://www.redrockglobal.com)

17 Jesse Hill Junior Drive, NE  
Atlanta, Georgia 30303



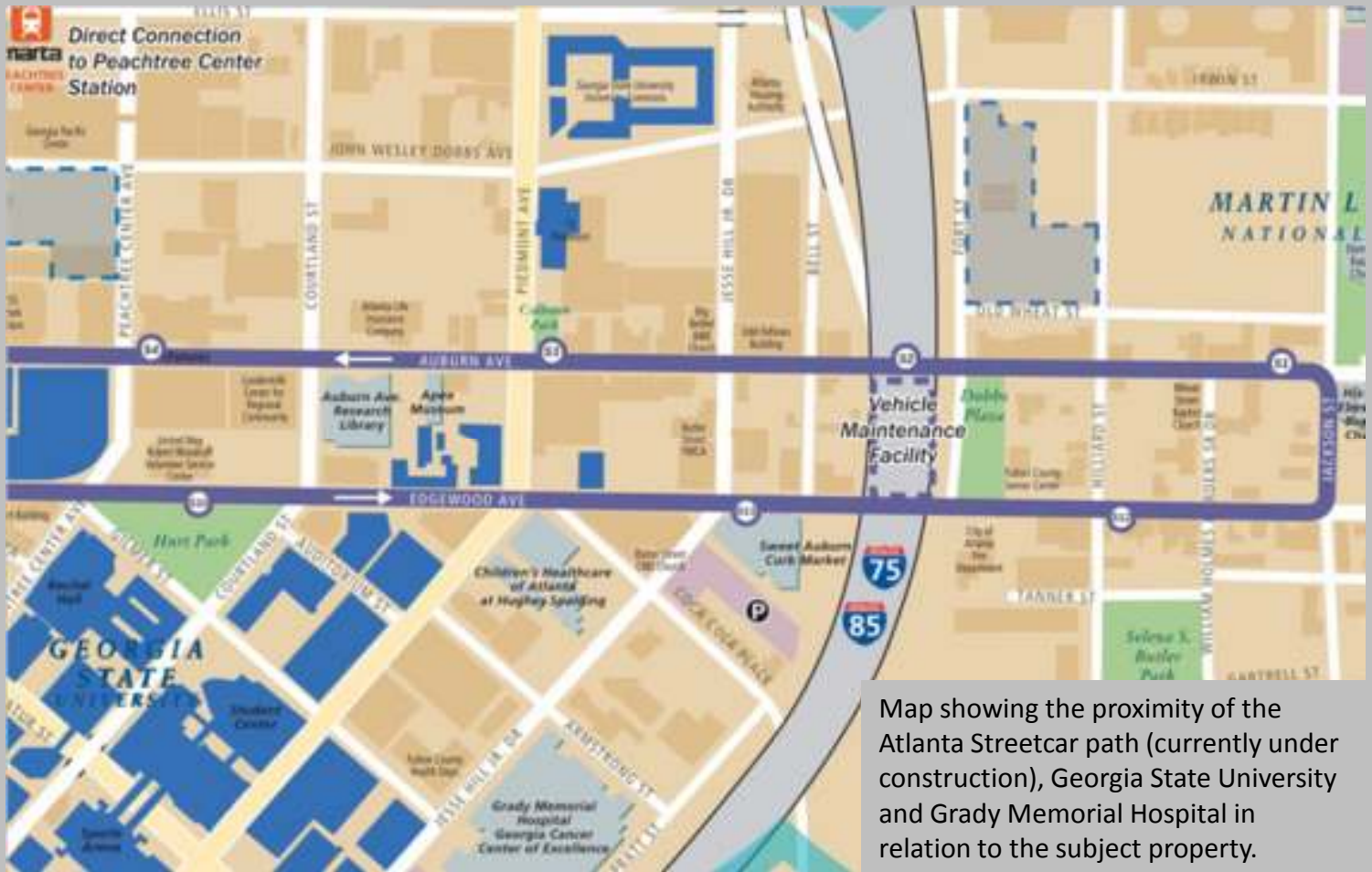
**17 Jesse Hill Junior Drive, NE  
Atlanta, Georgia 30303**



**17 Jesse Hill Junior Drive, NE  
Atlanta, Georgia 30303**



**17 Jesse Hill Junior Drive, NE  
Atlanta, Georgia 30303**



Map showing the proximity of the Atlanta Streetcar path (currently under construction), Georgia State University and Grady Memorial Hospital in relation to the subject property.



This brochure has been prepared to provide summary information to prospective tenants to establish a preliminary level of interest in the property presented. All information contained herein is from sources deemed reliable; however no representations or warranties are made to the accuracy or completeness thereof. All Rights Reserved.

	1 Mile	3 Miles	5 Miles
<b>Population: 2012B</b>			
Total Population	21,616	163,291	328,063
Female Population	46.3%	46.1%	48.5%
Male Population	53.7%	53.9%	51.5%
Population Density	6,955	5,794	4,295
Population Median Age	32.0	31.0	32.0
Total Employees	115,775	232,903	335,071
Total Establishments*	4,994	16,271	25,637
Population Growth 2000-2010	9.9%	4.1%	-1.1%
Population Growth 2012B-2017	3.7%	4.7%	2.9%
<b>Income: 2012B</b>			
Average Household Income	\$55,244	\$74,054	\$76,393
Median Household Income	\$32,899	\$41,179	\$41,601
Per Capita Income	\$29,046	\$35,407	\$34,651
Avg Income Growth 2000-2010	N/A%	-56.4%	-14.5%
Avg Income Growth 2012B-2017	11.6%	10.8%	10.7%
<b>Households: 2012B</b>			
Households	10,108	73,726	143,241
Average Household Size	1.58	1.87	2.05
Hhld Growth 2000-2010	10.5%	15.2%	8.1%
Hhld Growth 2012B-2017	6.0%	7.1%	5.1%
<b>Housing Units: 2012B</b>			
Owner Occupied Units	10,108	73,726	143,241
% Owner Occupied Units	82.3%	84.2%	85.3%
% Vacant Housing Units	17.7%	15.8%	14.7%
Owner Occ Housing Growth 2000-2010	100.5%	35.5%	13.5%
Owner Occ Housing Growth 2000-2017	127.7%	48.2%	20.3%
Owner Occ Housing Growth 2012B-2017	10.7%	7.5%	4.3%
Occ Housing Growth 2000-2010	13.3%	15.3%	7.9%
Occ Housing Growth 2010-2017	14.6%	14.1%	11.4%
Occ Housing Growth 2012B-2017	6.0%	7.1%	5.1%
<b>Race and Ethnicity: 2012B</b>			
% American Indian or Alaska Native Population	0.3%	0.2%	0.3%
% Asian Population	3.3%	4.9%	4.0%
% Black Population	55.6%	46.4%	48.7%
% Hawaiian or Pacific Islander Population	0.0%	0.0%	0.0%
% Multirace Population	2.8%	2.5%	2.2%
% Other Race Population	1.7%	1.4%	2.0%
% White Population	36.4%	44.6%	42.8%
% Hispanic Population	4.8%	4.2%	5.1%
% Non Hispanic Population	95.2%	95.8%	94.9%