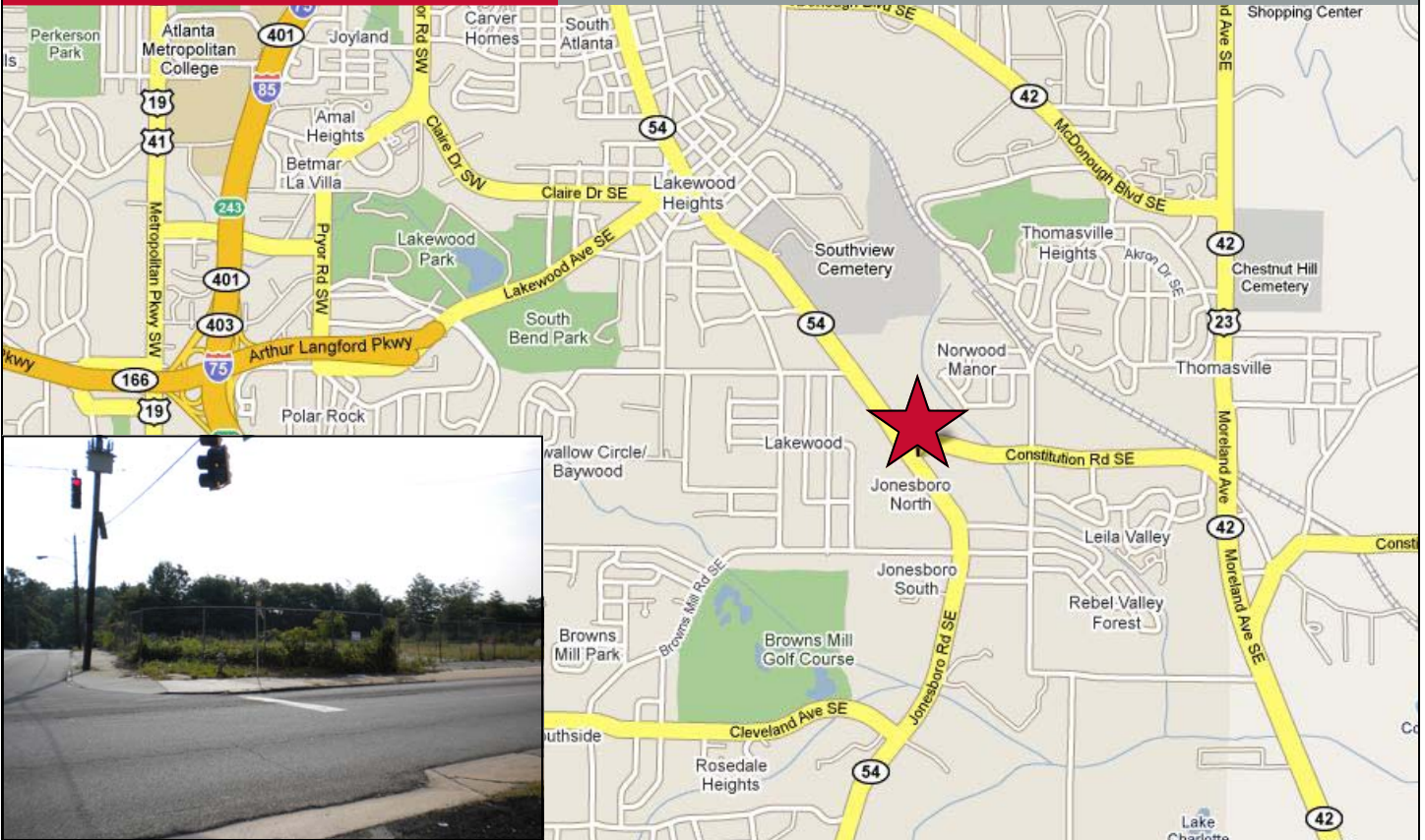


# COMMERCIAL LAND FOR SALE

## D Lee Development

705 Constitution Road, SE  
Atlanta, GA 30315



Redevelopment Opportunity  
.78/ac Zoned I-1C

### PROPERTY ATTRIBUTES

- Retail development opportunity in fast growing Southeast Atlanta
- Designated as an Atlanta Renewal Community
- Level topography
- Located within the Jonesboro Road redevelopment plan
- Great corner location for grocery store or restaurant
- Minutes to Turner Field, Grant Park and Lakewood Park
- Minutes to the I-75/85 interstate and the I-285 connector
- Access to MARTA bus service

### CONTACT

Michael Tabb  
mtabb@redrockglobal.net  
Tarik Icgoren  
ticgoren@redrockglobal.net  
(404) 815-1819  
www.redrockglobal.net

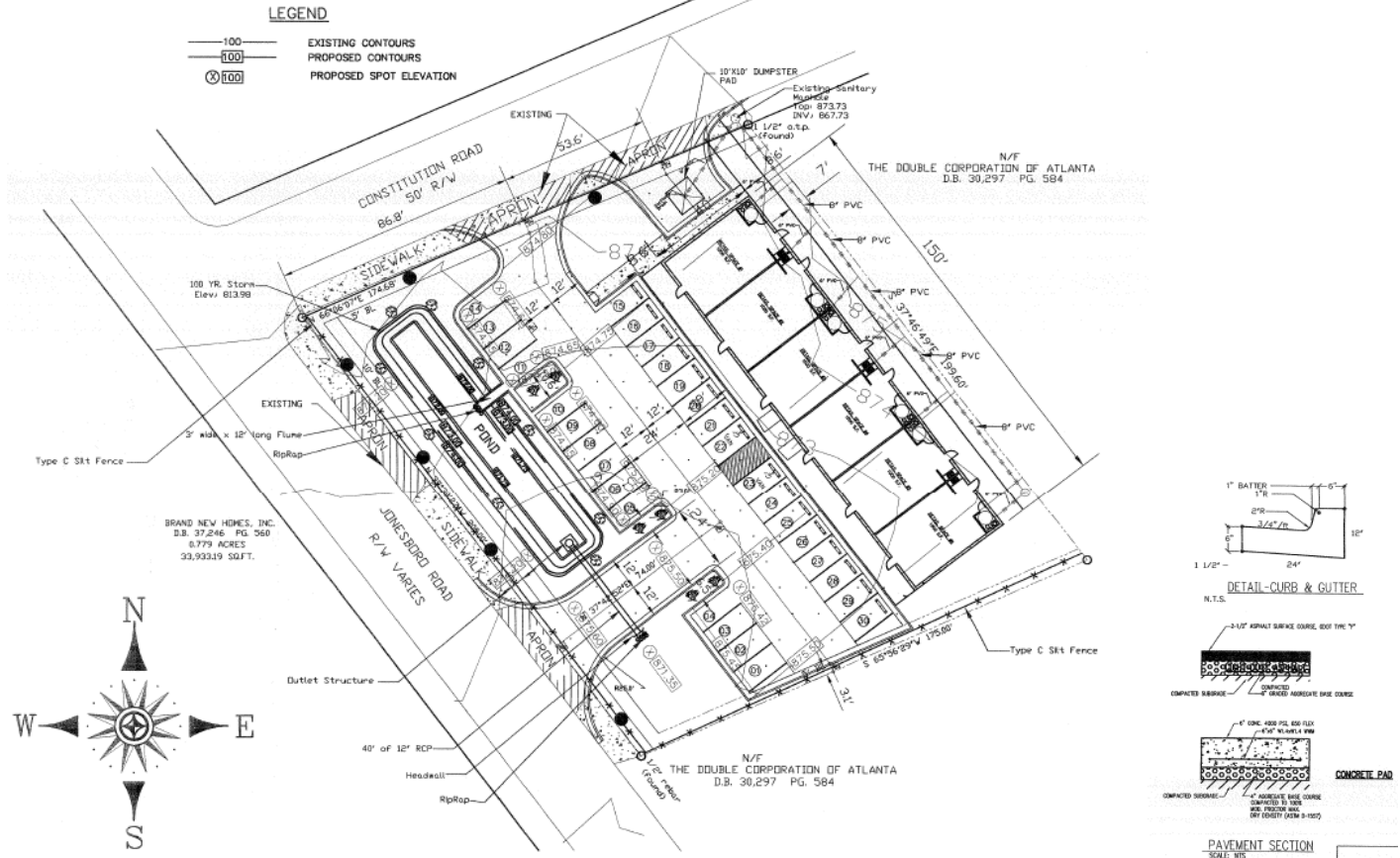
*Red Rock*  
global  
REAL ESTATE SERVICES COMPANY

# COMMERCIAL LAND FOR SALE

## D Lee Development

705 Constitution Road, SE  
Atlanta, GA 30315

### Proposed Development



### DEMOGRAPHICS

#### Population - Household - Housing

	1 Mile	3 Mile	5 Mile
2008 Total Population	10,237	82,656	252,749
Pop Growth 2008-2013	9.44%	9.89%	8.33%
Per Capita Income	\$9,190	\$13,853	\$16,235
Average Age	29.70	32.70	34.00
2008 Total Households	2,936	26,159	87,667
HH Growth 2008-2013	7.66%	9.21%	8.40%
Median Household Inc	\$21,508	\$30,018	\$32,424
Avg Household Size	3.49	3.02	2.73
Avg HH Vehicles	1.10	1.20	1.20
Avg Travel Time - Work	35 min	36 min	34 min
Median Housing Value	\$88,889	\$110,018	\$120,825
Median Year Built	1969	1968	1967
Traffic Count:	9,440 cars daily		

This brochure has been prepared to provide summary information to prospective tenants to establish a preliminary level of interest in the property presented. All information contained herein is from sources deemed as reliable; however no representations or warranties are made to the accuracy or completeness thereof. All right reserved

**COMMERCIAL LAND FOR SALE**

D Lee Development

705 Constitution Road, SE  
Atlanta, GA 30315



Fulton County Parcel ID# 14-00270001-0272