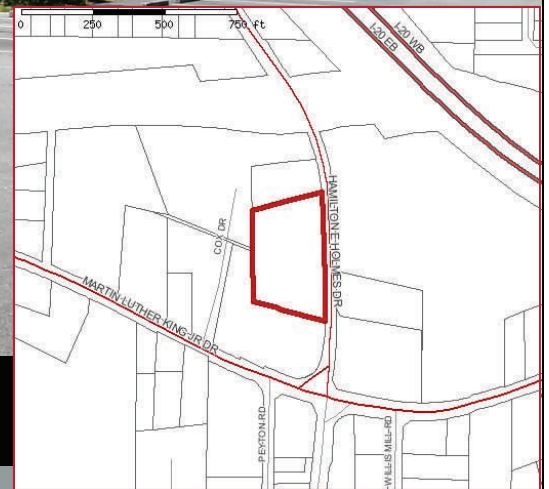




PROPERTY FOR SALE

38 HAMILTON E. HOMES DRIVE
ATLANTA, GA 30311



+/- 2.03 Acres, Zoned C-3

PROPERTY ATTRIBUTES

- +/- 431 feet of frontage
- Excellent faith-based, or educational facility
- Excellent redevelopment potential
- Located in popular, quality commercial area
- Great commuter and pedestrian traffic
- Adjacent to H.E. Holmes MARTA Station
- Close proximity to schools and dense residential neighborhoods
- Zoned C-3 allowing bank, restaurant, recreational uses
- Improvements include +/- 13,000 sf church/ administration and 1,500 +/- sf parsonage and expansive parking lot

CONTACT

David Sweet

wdsweet@redrockglobal.net

Trenna Ross

tross@redrockglobal.net

(404) 815-1819

www.redrockglobal.net

Red Rock
global
REAL ESTATE SERVICES COMPANY



PROPERTY FOR SALE

38 HAMILTON E. HOMES DRIVE
ATLANTA, GA 30311



DEMOGRAPHICS

Population	1 Mile			2 Mile			3 Mile		
	Population	Households	Avg HH Income	Population	Households	Avg HH Income	Population	Households	Avg HH Income
2011 Projection:	9,013	3,547	\$44,867	33,139	12,267	\$45,553	77,720	28,153	\$43,045
2006 Estimate:	9,126	3,577		34,142	12,625		80,222	29,109	
2000 Census:	9,313	3,629		35,754	13,210		83,786	30,467	
		2006 Avg HH Income							

Traffic Counts

Martin Luther Kings Jr. Drive SW:	22,420
Hamilton E. Holmes:	16,700
Interstate 20:	145,460

© Red Rock Global, LLC This brochure has been prepared to provide summary information to prospective tenants to establish a preliminary level of interest in the property presented. All information contained herein is from sources deemed as reliable; however no representations or warranties are made to the accuracy or completeness thereof. All right reserved