



# RETAIL SPACE FOR LEASE

3721 CAMPBELTON ROAD SW  
ATLANTA, GA 30331



RETAIL SPACES RANGING FROM  
1,200-10,020 SF

## PROPERTY ATTRIBUTES

- Brand new neighborhood retail center
- Excellent for small shop shops, deli, dry cleaners, wireless communications, mail service, etc...
- Property Anchored by CVS
- Great visibility on Fairburn Road
- Conveniently accessible to I-285
- Developed by Russell New Urban Development, LLC
- Traffic Counts: 63,580 vehicles per day

## CONTACT

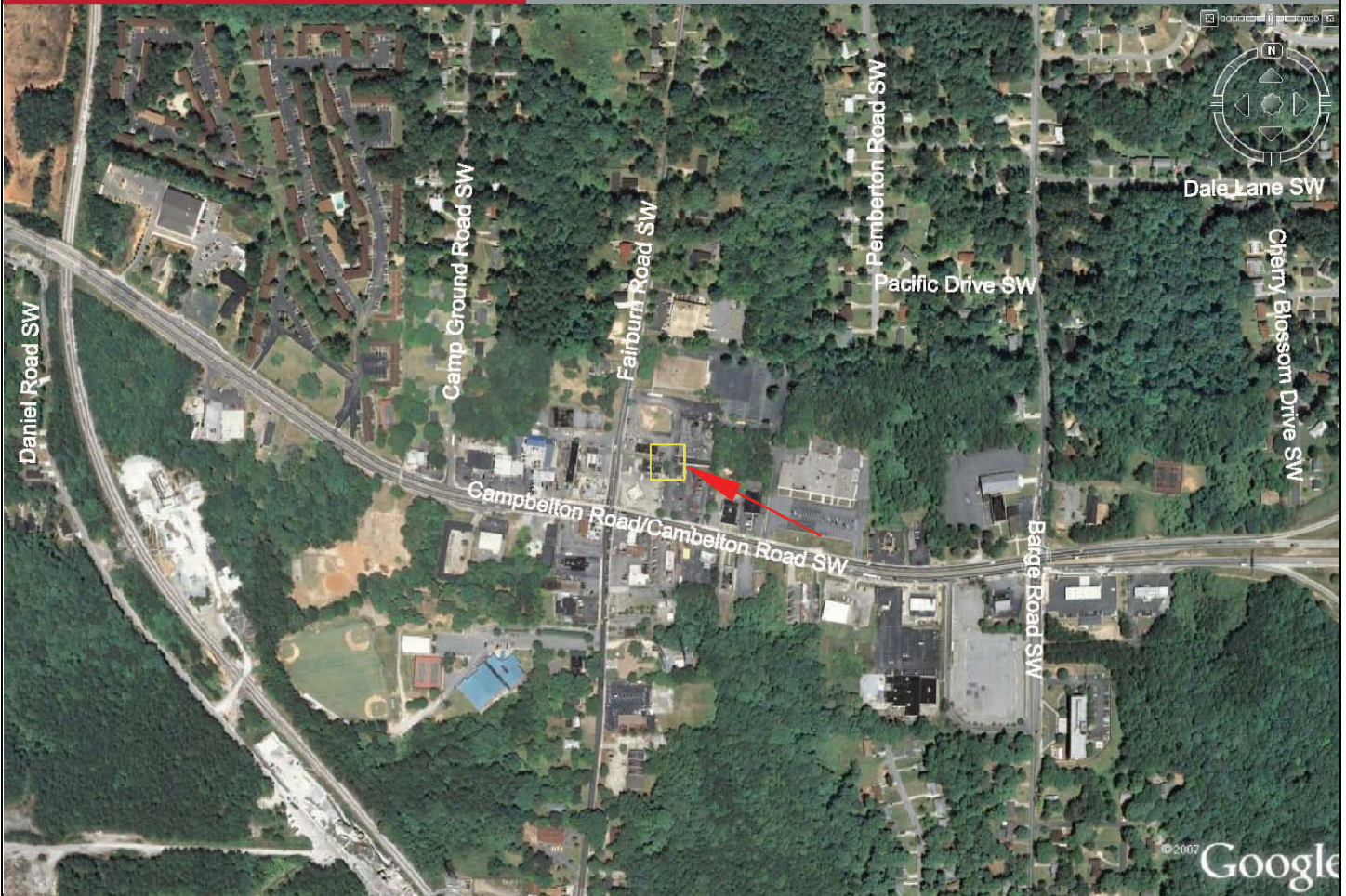
Trenna Ross  
(404) 815-1819  
tross@redrockglobal.net  
www.redrockglobal.net





# RETAIL SPACE FOR LEASE

3721 CAMPBELTON ROAD SW  
ATLANTA, GA 30331



## DEMOGRAPHICS

	<u>1 Mile</u>	<u>3 Mile</u>	<u>5 Mile</u>
Estimated Population 2008	6,342	50,535	154,164
Projected Population 2013	6,890	56,038	169,324
Average Household Income 2008	\$55,483	\$63,961	\$55,784
Households 2008	2,341	19,019	56,966
Median Age 2008	36	37	36