

## LAKE PROPERTY

## LAND FOR SALE

255 FLAT SHOALS CHURCH ROAD  
STOCKBRIDGE, GEORGIA 30281



Lot Size: 9.9 Acres, Zoned RA

### PROPERTY ATTRIBUTES

- Unincorporated Henry County
- Land at +/- 5.4 acres plus +/- 4.5 acres of the beautiful, natural spring fed Jinco Lake
- Gently slopes from road to lake
- Minutes to Routes 138 and 155
- Quiet, gorgeous community
- Schools: Austin Road - Elementary & Middle  
Stockbridge - High

### CONTACT

David Sweet

(404) 815-1819

[wdsweet@redrockglobal.net](mailto:wdsweet@redrockglobal.net)

[www.redrockglobal.net](http://www.redrockglobal.net)

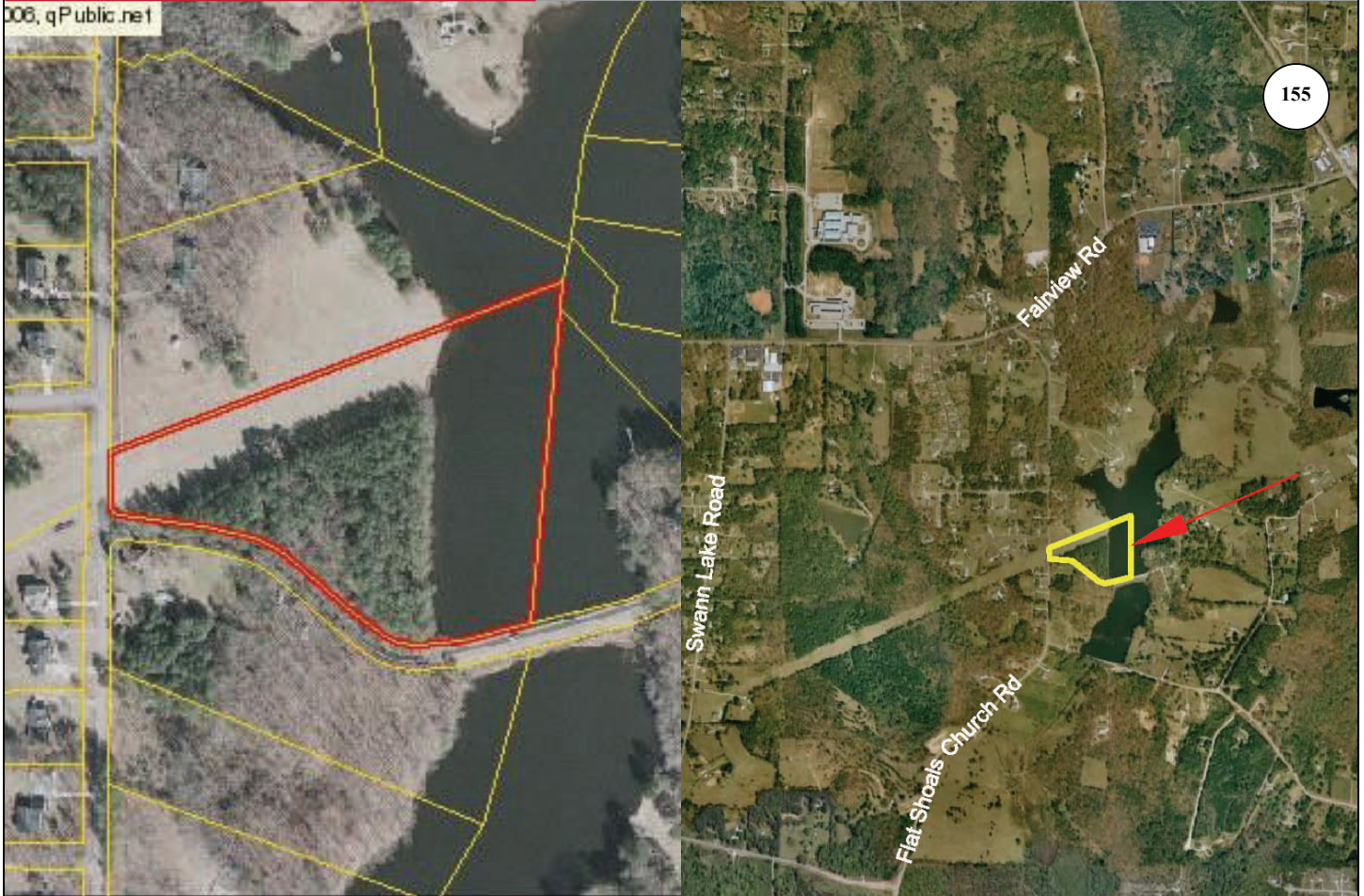
*Red Rock*  
global

REAL ESTATE SERVICES COMPANY

# LAND FOR SALE

## LAKE PROPERTY

255 FLAT SHOALS CHURCH ROAD  
STOCKBRIDGE, GEORGIA



## DEMOGRAPHICS

Population	1 Mile	3 Mile	5 Mile	Household Income	1 Mile	2 Mile	3 Mile
2011 Projection:	4,953	40,050	117,074	2006 Avg HH Inc:	\$74,617	\$70,245	\$64,536
2006 :	4,190	33,969	99,682	2006 Med HH Inc:	\$66,298	\$62,459	\$57,520
2000 Census:	3,301	26,830	78,856	2006 Per Cap Inc:	\$25,439	\$24,137	\$22,601
Growth 2006-11	18.21%	17.90%	17.45%				
Growth 2000-06	26.90%	26.60%	26.41%				
<b>Households</b>							
2011 Projection	1,701	13,825	41,071				
2006	1,428	11,670	34,693				
2000 Census	1,113	9,150	27,240				

© Red Rock Global, LLC This brochure has been prepared to provide summary information to prospective tenants to establish a preliminary level of interest in the property presented. All information contained herein is from sources deemed as reliable; however no representations or warranties are made to the accuracy or completeness thereof. All right reserved