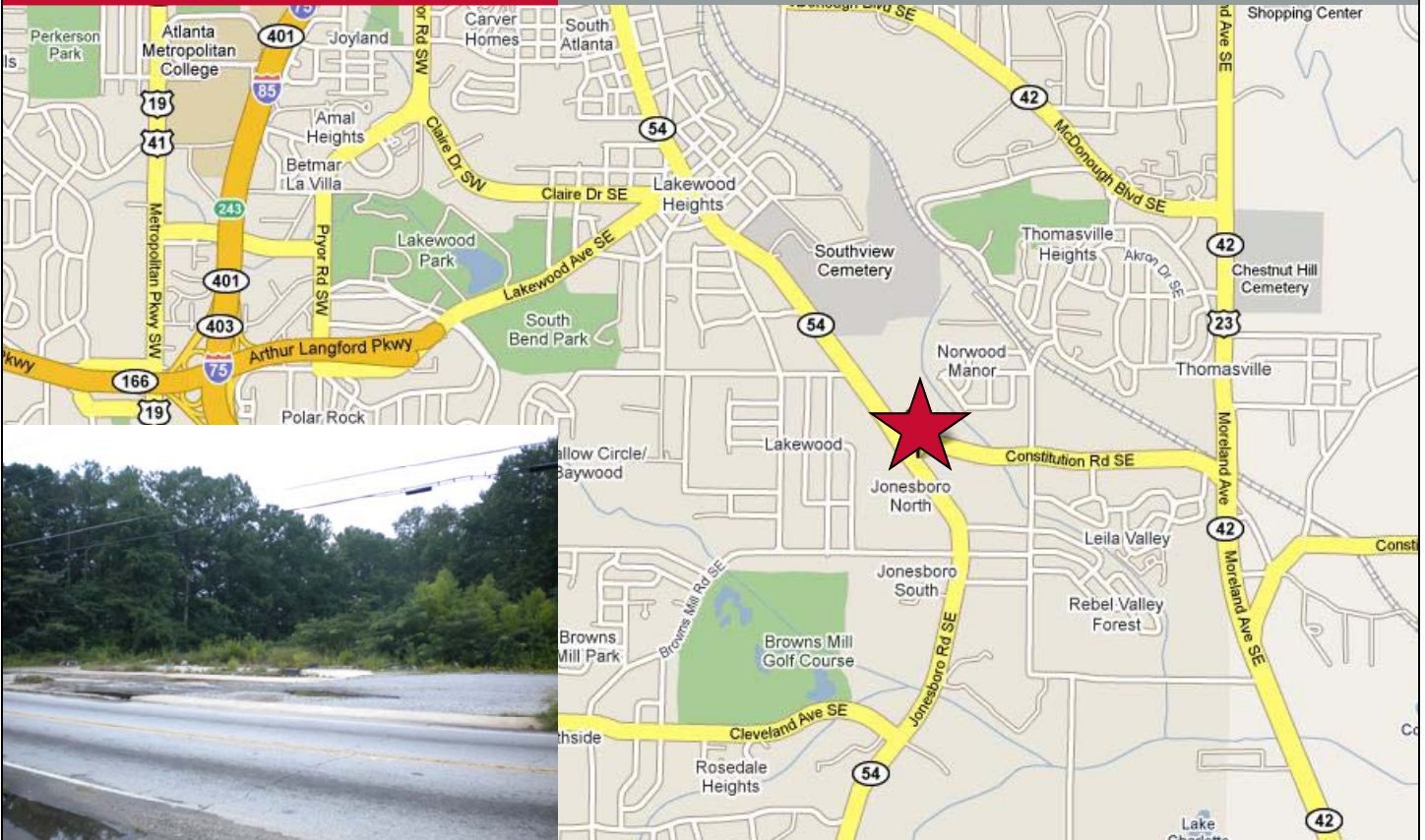


COMMERCIAL LAND FOR SALE

D Lee Development

2247 Jonesboro Road, SE
Atlanta, GA 30315



6.19 Acres Development Site
Zoned RG-2

PROPERTY ATTRIBUTES

- Residential development opportunity in fast growing Southeast Atlanta
- Designated as an Atlanta Renewal Community
- Located within HUB Zone and within the Jonesboro Road Redevelopment plan
- Located at the heart of Constitution Road/Jonesboro Road Intersection
- Adjacent to retail development
- Minutes to Turner Field, Grant Park and Lakewood Park
- Minutes to the I-75/85 interstate and the I-285 connector
- Access to MARTA bus service

CONTACT

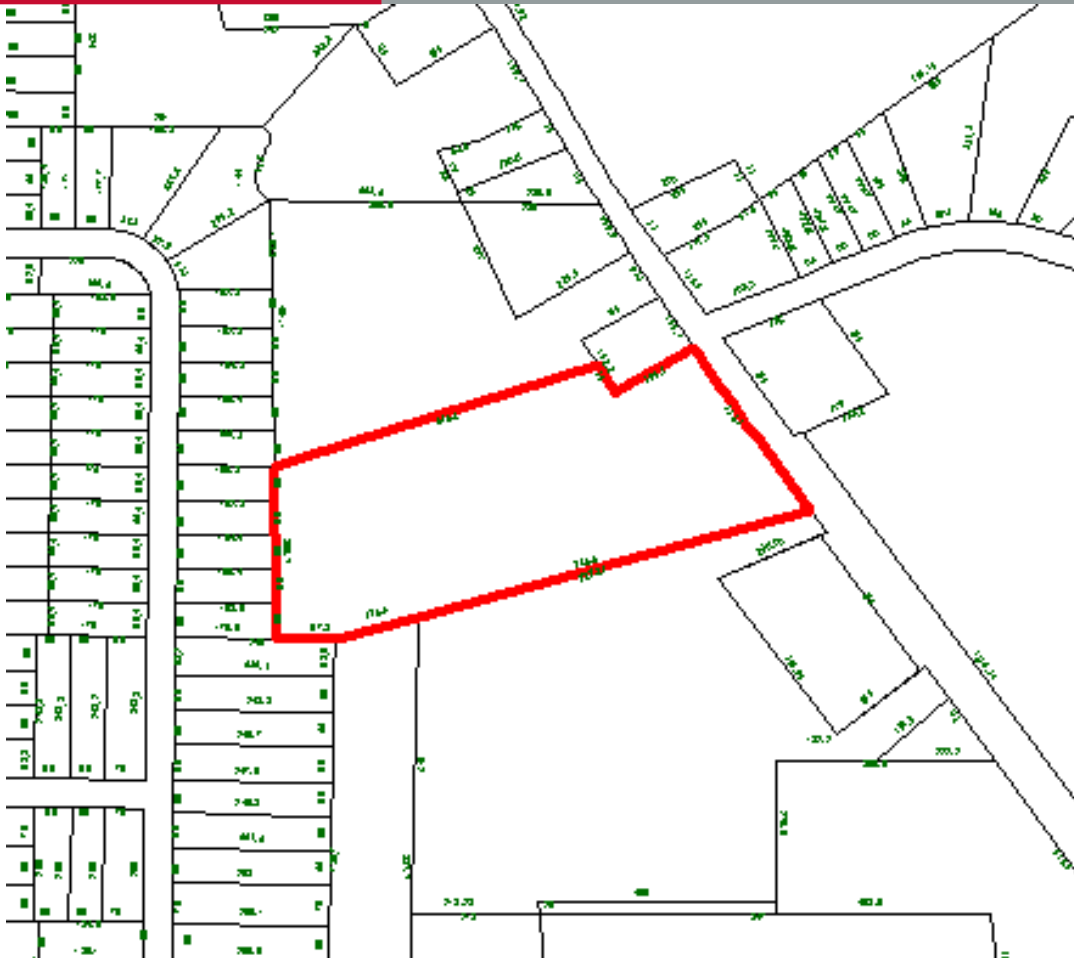
Michael Tabb
mtabb@redrockglobal.net
Tarik Icgoren
ticgoren@redrockglobal.net
(404) 815-1819
www.redrockglobal.net

RedRock
global
REAL ESTATE SERVICES COMPANY

COMMERCIAL LAND FOR SALE

D Lee Development

2247 Jonesboro Road, SE
Atlanta, GA 30315



DEMOGRAPHICS

Population - Household - Housing	1 Mile	3 Mile	5 Mile
2008 Total Population	10,237	82,656	252,749
Pop Growth 2008-2013	9.44%	9.89%	8.33%
Per Capita Income	\$9,190	\$13,853	\$16,235
Average Age	29.70	32.70	34.00
2008 Total Households	2,936	26,159	87,667
HH Growth 2008-2013	7.66%	9.21%	8.40%
Median Household Inc	\$21,508	\$30,018	\$32,424
Avg Household Size	3.49	3.02	2.73
Avg HH Vehicles	1.10	1.20	1.20
Avg Travel Time - Work	35 min	36 min	34 min
Median Housing Value	\$88,889	\$110,018	\$120,825
Median Year Built	1969	1968	1967
Traffic Count:	9,440 cars daily		