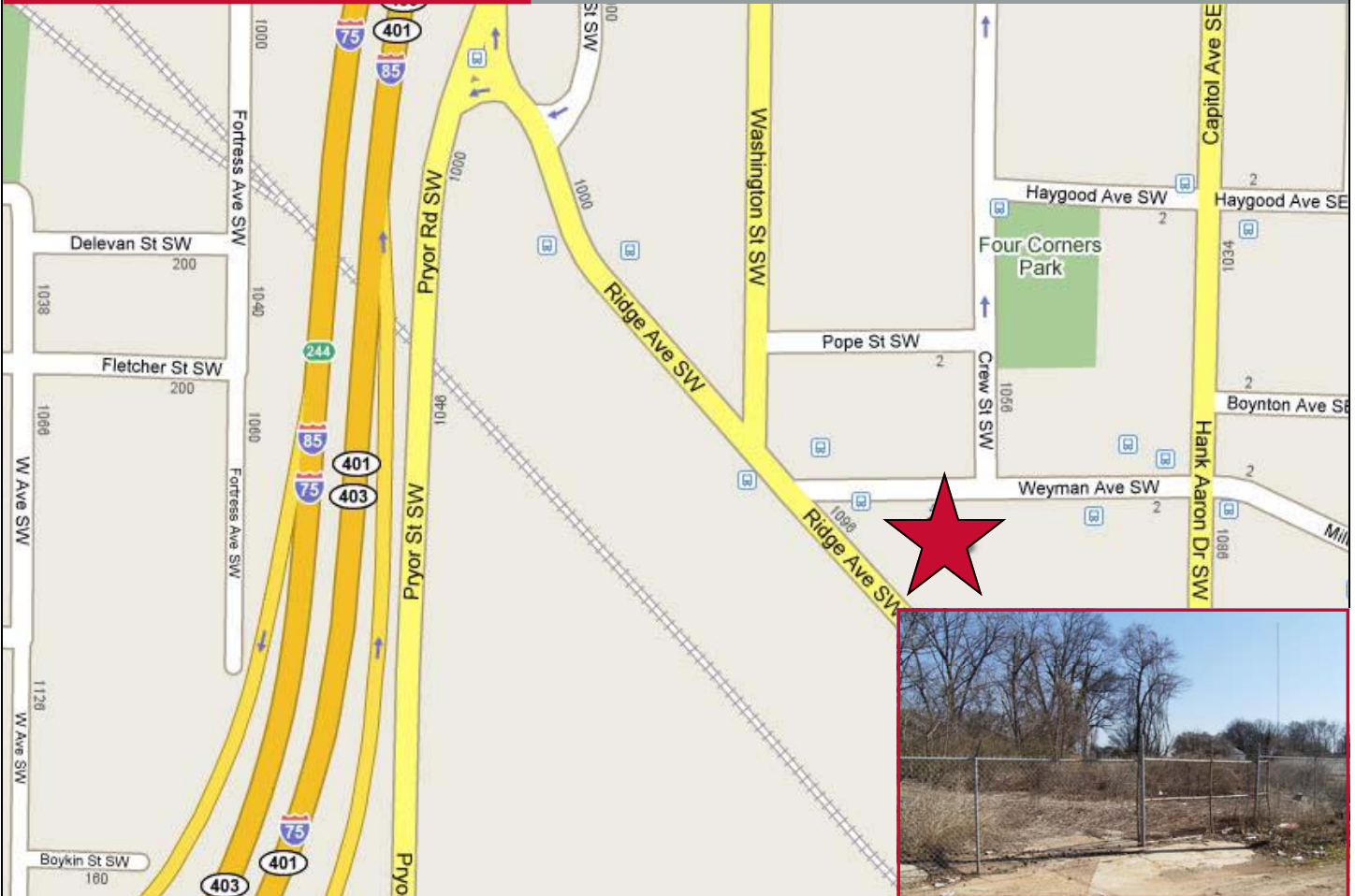


**SLAM DEVELOPMENT
PROPERTY**

LAND FOR SALE

1100 RIDGE AVENUE SE
ATLANTA, GA 30315



DEMOGRAPHICS

Population - Household - Income	1 Mile	3 Mile	5 Mile
2008 Total Daytime Population	14,972	186,651	395,496
2008 Median Age Total Population	32	32	33
2008 Total Population	14,097	135,976	336,965
2008 Total Households	4,640	46,760	122,296
% Population Change 2000-2008	27.60%	14.22%	12.91%
% Households Change 2000-2008	19.28%	9.47%	9.21%
2008 Average Household Income	\$42,304	\$49,284	\$61,095