

## REED'S PROPERTY

## BUILDING FOR SALE

1020 & 1024 DONALD LEE HOLLOWELL  
ATLANTA, GA 30318



+/- .75 Acres

Building Zoned C-2 & Vacant lots Zone R-4A

### PROPERTY ATTRIBUTES

- +/- 146 feet of street frontage on Donald Lee Hollowell Parkway
- Improvements include +/- 11,000 sf 2 story warehouse, +/- 1,400 sf brick building along with 2 additional lots of +/- 6,900 sf each
- Main building ceiling heights are greater than 12 feet
- Property is a corner lot enclosed by security fencing
- Excellent redevelopment potential, mixed-used opportunity
- Close to proposed Beltline redevelopment
- Within minutes of Northside Drive, the Georgia Dome, Centennial Olympic Park and other popular tourist attractions
- Close proximity to the Bankhead Marta Station
- Adjacent to the densely populated Vine City neighborhood

### CONTACT

James Wright

(404) 399-9902

[jwright@redrockglobal.net](mailto:jwright@redrockglobal.net)

[www.redrockglobal.net](http://www.redrockglobal.net)

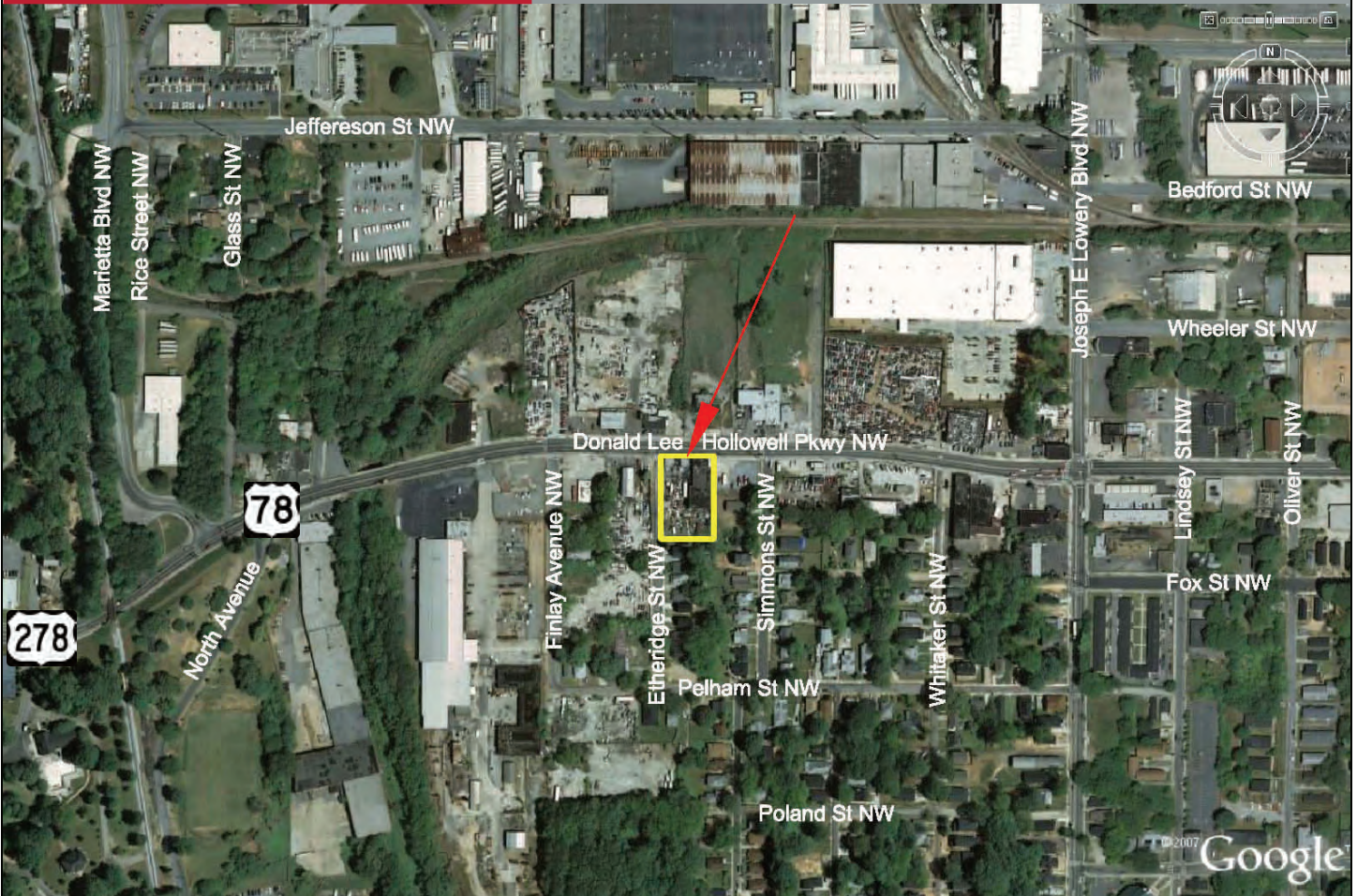
*Red Rock*  
global  
REAL ESTATE SERVICES COMPANY

The *Asset* Shop

# REED'S PROPERTY

# BUILDING FOR SALE

1020 & 1024 DONALD LEE HOLLOWELL  
ATLANTA, GA 30318



## DEMOGRAPHICS

	1 Mile	3 Mile	5 Mile		1 Mile	3 Mile	5 Mile
<b>Population</b>				<b>Households</b>			
2007 Total Population:	23,900	164,181	355,424	2007 Total Households:	6,083	71,382	149,123
Pop Growth 2007-2012:	8.21%	9.71%	8.61%	HH Growth 2007-2012:	12.40%	11.60%	9.38%
Per Capita Income:	\$9,467	\$28,923	\$30,417	Median HH Inc:	\$19,744	\$38,304	\$42,276
Average Age:	28.80	34.90	35.60	Avg HH Size:	2.24	1.95	2.17
				Avg HH Vehicles:	.90	1.10	1.20
<b>Housing</b>				Ave Travel Time - Wrk:	28 min	27 min	28 min
Median Housing Value:	\$131,977	\$257,277	\$245,857				
Median Year Built:	1969	1970	1967				

© Red Rock Global, LLC This brochure has been prepared to provide summary information to prospective tenants to establish a preliminary level of interest in the property presented. All information contained herein is from sources deemed as reliable; however no representations or warranties are made to the accuracy or completeness thereof. All right reserved

# REED'S PROPERTY

# BUILDING FOR SALE

1020 & 1024 DONALD LEE HOLLOWELL  
ATLANTA, GA 30318

